

— OCTOBER 2023

Impact Hub London Euston at Regent's Place

The expansion of Impact Hub London, with the opening of our Impact Hub London Euston at Regent's Place, **represents a significant milestone in our mission to empower and support changemakers** in driving positive social and environmental impact.

The new site will provide a **vibrant and inclusive space for collaboration, connection, and innovation**. From private offices and dedicated desks to flexible co-working spaces, meeting rooms and a large state of the art event space, we aim to create **an environment that nurtures creativity, collaboration, and productivity**.

— EUSTON

Overview



London



KNOWLEDGE
QUARTER

**Impact Hub London Euston at Regent's Place
provides a vibrant space for collaboration,
connection, and inclusive innovation.**

**Delivered in partnership with the
Knowledge Quarter.**



— EUSTON

Get to know the neighbourhood



Regent's Place

- 1 Triton Square

Our Euston location is based at 1 Triton Square, Regent's Place, a 13-acre neighbourhood with workspace available for every business from arts and creative to science and research.

Located between Camden, Regent's Park, Fitzrovia, Euston and Marylebone, and with five tube stations within an 8-minute walk, it is one of the most accessible areas in London.

1 Triton Square was originally designed by British Land in the 1990s with future regeneration in mind. Now, twenty years later, the building has been refurbished, demonstrating the power of sustainable practices that not only save time and money but also contributes to reducing carbon emissions.

1 Triton Square has been awarded **BREEAM Outstanding**, reflecting the sustainability of the project.



London



KNOWLEDGE
QUARTER

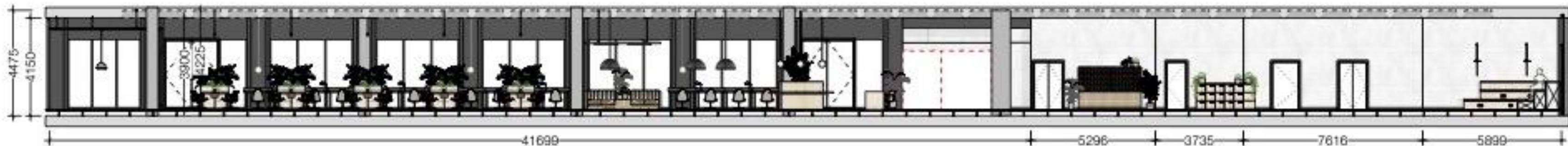
Our Euston location serves as a showcase for sustainability, circularity, and inclusive design, aligning perfectly with the vision of Regent's Place as a beacon of sustainable architecture and operations.



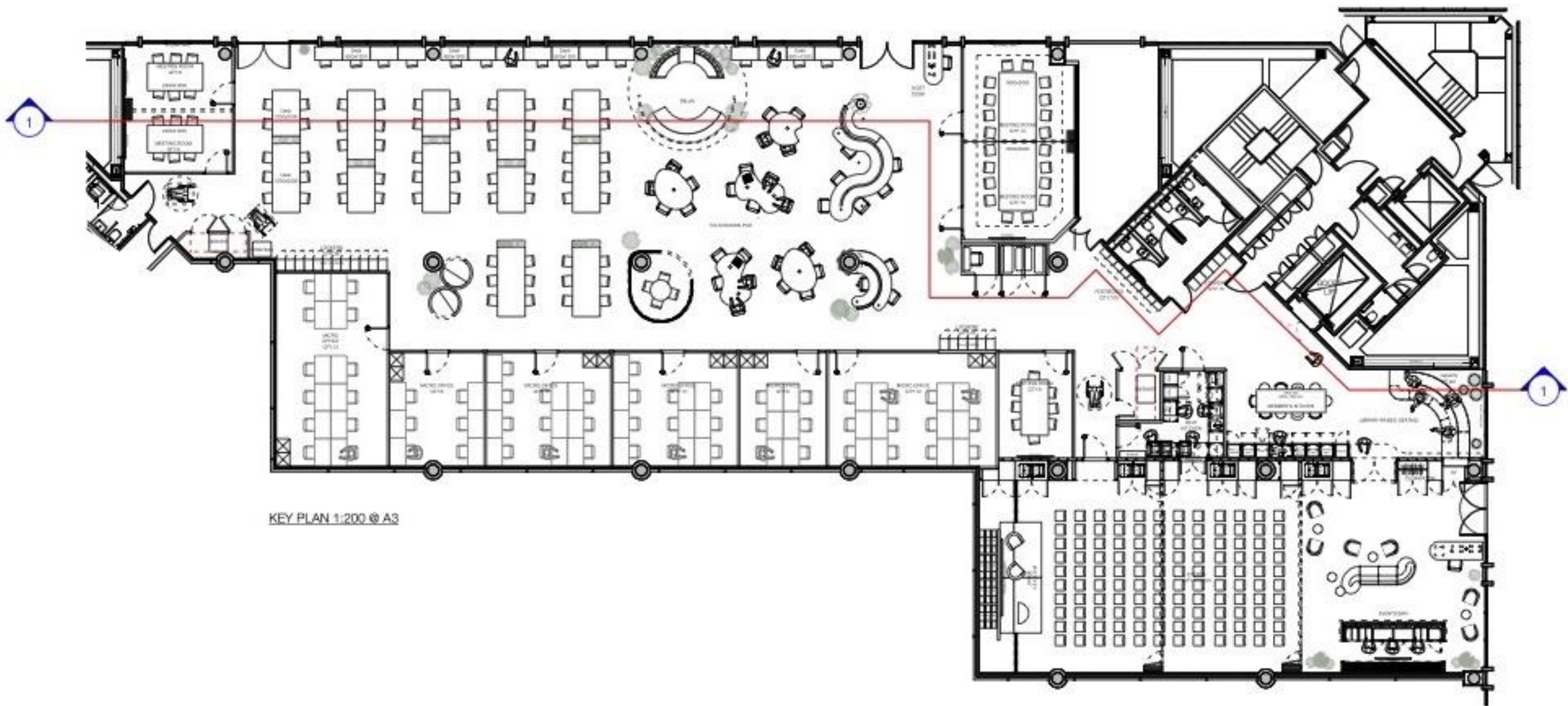
— EUSTON

Find the space that's right for you





1 North Elevation Overall
1:200 @ A3



KEY PLAN 1:200 @ A3



Micro Offices





Early Bird Offers

Sign up and pay before we open:

Opening Month: 50% off

Month 2: 30% off

Month 3: 10% off

Year 1 offer: pay a full year in advance
(plus deposit)

**Additional 10% off for
the next 9 months**



Units	Capacity	Monthly Rental (exc VAT)	Annual Rental	Annual Rental with 3 Month Discount	Pay a year in advance
Micro offices 2 & 5	6	£3,900	£46,800	£43,290 (saving £3,510)	£39,780 (saving £7,020)
Micro offices 3 & 4	10	£6,500	£78,000	£72,150 (saving £5,850)	£66,300 (saving £11,700)
Micro offices 1 & 6	12	£7,800	£93,600	£86,580 (saving £7,020)	£79,560 (saving £14,040)

All contracts subject to deposits and cancellation periods. T&Cs apply.

Prices exclude VAT

Team Desks

Our team desks cater to businesses who want a full-time base in Central London. Made up of 4, 6 or 10 full-time seats, these serviced office areas can be tailored to your needs to help you work at your best.



Units	Available units	Monthly Rental (exc VAT)	Annual Rental	Annual Rental with 3 Month Discount	Pay a year in advance
4 seat Team Desk	5	£1,720	£20,640	£19,092 (saving £1,548)	£17,544 (saving £3,096)
6 seat Team Desk	6	£2,580	£30,960	£28,638 (saving £2,322)	£26,316 (saving £4,644)
10 seat Team Desk	5	£4,300	£51,600	£47,730 (saving £3,870)	£43,860 (saving £7,740)

All contracts subject to deposits and cancellation periods. T&Cs apply.

Prices exclude VAT



A home for positive change in the heart of London – that's what our coworking space is all about.

Whether you're a small team, entrepreneur, or freelancer, here you can accelerate your impact.

Coworking



Whether you're introverted or extroverted, concentrating or collaborating, find a cosy and effective place for you to work.

Members can choose to work from the open coworking areas, library, break out area, or even the kitchen.

Take your calls from the phone booth, chat or huddle in the library - whatever it may be, we want you to feel at home with us.

Meet & Eat

	Non-member day pass	Connect	Hub 30	Hub 50	Hub 100	Fixed Desk	Micro Office
Price*	£30 (per day)	£15	£90	£140	£260	£430 per seat	£650 per seat
Meeting room discount	X	10%	20%	30%	40%	45%	50%
Registered business address/ Mail forwarding*	X	£35 /£45	£35 /£45	£35 /£45	£35 /45	Free	Free
Guest allowance/ per day	X	X	1 hour	2 hours	3 hours	4 hours	4 hours
Storage*	X	£32.50	£32.50	£32.50	£32.50	Free	Free

*Price per month.
All memberships are individual memberships

Prices exclude VAT

Membership Benefits



Flexible membership packages



Mailbox & storage services



Video conferencing



High speed wifi



Inspiring Events



Discounted meeting rooms & free guest allowance



Breakout spaces



Hubspot 90% discount for startups revenue under £2 M



Facilitated connections to help your business grow



Access to regular business clinics and support



Access to a Global community network



Carbon offsetting with Goodwings



— OUR FACILITIES

Meeting Rooms

Our Meeting Rooms are excellent spaces to host collaboration sessions, board meetings, strategy sessions, conference calls, and brainstorming sessions.

The rooms are equipped with screens with HDMI connection, integrated microphones and a conferencing system.

Meeting rooms capacity

- 1 x 6 person
- 1 x 8 person
- 1 x 10 person
- 1 x 20 person (or divisible into 2 x 10 people)



Meeting Room Prices

Rooms	Size	Price per hour	Connect	Hub30	Hub50	Hub100	Fixed Desk	Micro Office
Discounts			10%	20%	30%	40%	45%	50%
Room 1	6	£39	£35	£31	£27	£23	£21	£19
Room 2	8	£45	£41	£36	£32	£27	£25	£23
Room 3	10	£57	£51	£46	£40	£34	£31	£29
Room 4	20*	£69	£62	£55	£48	£41	£38	£35

* This room has the ability to be divided into two 10 person meeting rooms, available at the same rate of Room 3

Prices exclude VAT



— OUR FACILITIES

Event Space

Our cutting-edge event space is the ideal location to host your next pitch night, panel discussions, and product launches conveniently.

The space can accommodate up to 150 people theatre style and our event staff can support you with set up and catering.

Additionally, our event space can be divided into two smaller workshop rooms. Workshop Room 1 includes the stage and a 4k ultra high definition projector, while Workshop Room 2 includes a 105" screen, with video conferencing facilities throughout.

Event Space Price

Rooms	Size	Half Day 4 hours Peak	Half Day 4 hours Off Peak	Full Day 9 hours Peak	Full Day 9 hours Off Peak
Entire Space	150	£1,300	£1,100	£2,600	£2,200
Workshop Room 1	55	£690	£600	£1,380	£1,200
Workshop Room 2	50	£630	£560	£1,260	£1,040

Off peak times are Mondays after 1800 or anytime on Friday, Saturday or Sunday.

Prices exclude VAT

— EUSTON

Community & Culture



We believe in the power of Community

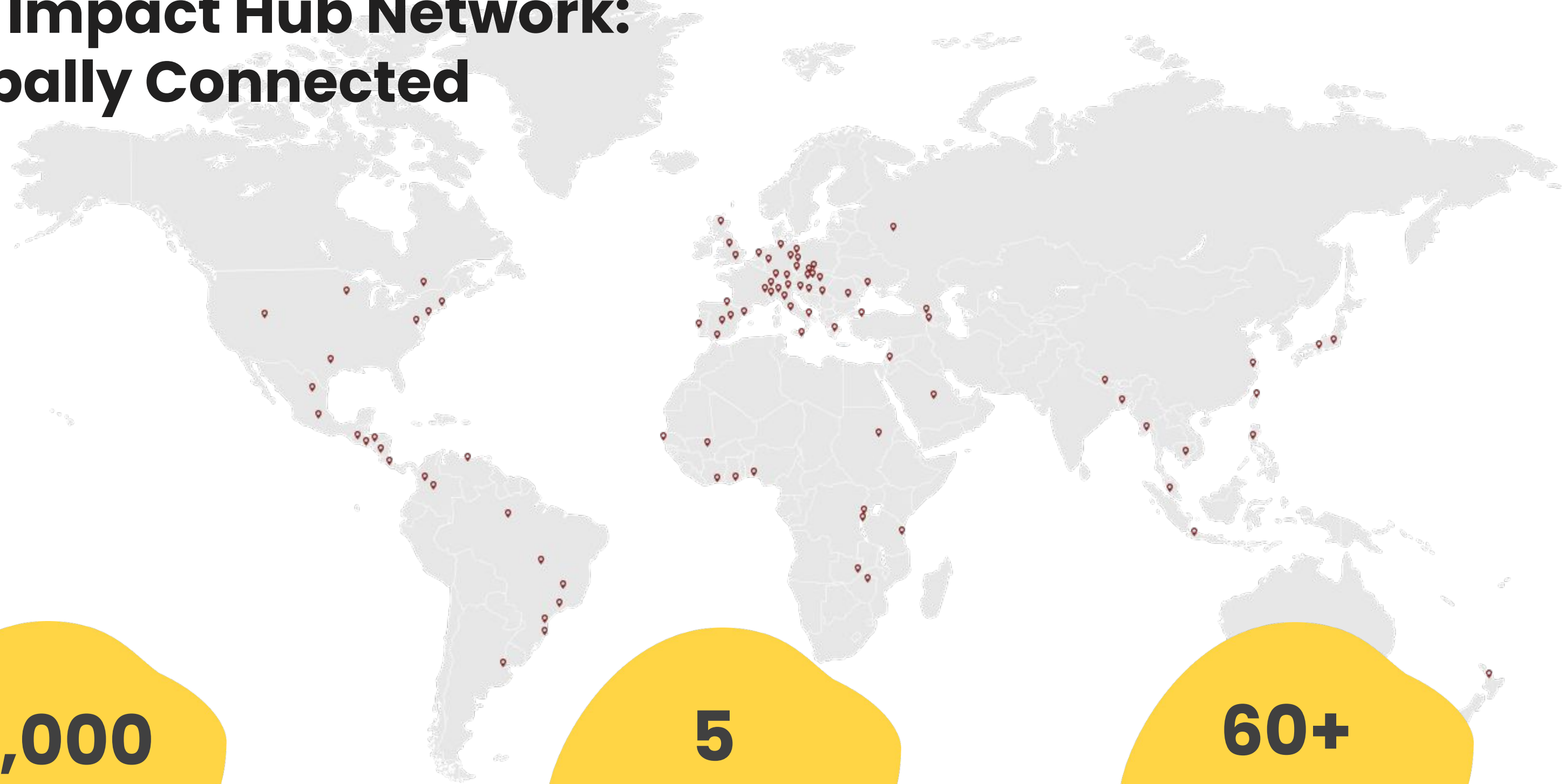
Impact cannot happen in isolation, it requires collective action.

That's why over the last 15 years we've built an ecosystem of over **100,000** social entrepreneurs, enablers, innovators, and intrapreneurs that provoke change together.

What our members think

- **Over 90%** say we support a better working infrastructure for their organisation
- **87%** of members say we strengthen their personal motivation
- **86%** would recommend us to a friend

The Impact Hub Network: Globally Connected



25,000
Members

5
Continents

60+
Countries



The Impact Hub network is built on three core values:

Trust, collaboration & courage

These are integral parts of the way we build and maintain our community.

A vibrant cultural offering ensures an open, diverse and welcoming environment. This is key to making the ecosystem accessible and attractive for anyone looking to actively experience, engage and co-shape a future that works for all.

— EUSTON

Our culture

— OUR COMMUNITY

Nemi Teas

“Impact Hub allows me to utilise my experience and skill-set to contribute back to the community that I have gained so much from over the years. The ability to share my knowledge and collaborate with like-minded individuals is a privilege for me.”

Pranav Chopra

Founder



NEMI Teas participated in our Feeding the City Accelerate programme. They craft specialist tea in plastic-free and biodegradable packaging and provide employment to refugees.

— OUR COMMUNITY

Resonance

“Our experience across the last 12 years has just been consistently brilliant. There’s something here that just works; whether the culture, the design or the values that perpetuate despite members of the team changing.”

Daniel Brewer

Chief Executive Officer



One of our longest-standing members, Resonance create and manage social impact and investment funds, where capital serves people and communities.

— OUR COMMUNITY

The Social Investment Consultancy

“As a global network ourselves, we are excited to be part of Impact Hub’s global network – it adds a lot to our motivation to be part of a movement striving for social and environmental impact!”

Bonnie Chiu

Managing Director



The Social Investment Consultancy works with changemakers across the globe, committed to delivering business consultancy that drives social change.

— OUR COMMUNITY

Food Ethics Council

“Membership is about the connections as much as the fantastic coworking space. We've been lucky to partner with the amazing Impact Hub London on a range of sustainable food projects, with the network allowing us to reach a global audience.”

Dan Crossley

Executive Director



Food Ethics Council is a not-for-profit organisation that provides independent advice on the ethics of food and farming.

— LET'S TALK

**Ready to
move in?**

Edozie Okafor

Membership Sales Executive
Impact Hub London

edozie.okafor@impacthub.net